



Model 1228-G



STANDARD FEATURES

- Epoxy coated steel frame with dual handles
- Lifetime frame warranty
- Easy access single bolt interlocking belt cover
- Pressure pump / Engine adjustable belt tension
- 50 mesh inlet filter
- EZ-Start
- Adjustable pressure unloader
- Secondary relive valve
- Pulsation dampener
- Low oil shutdown
- Engine and pump oil drains offer easy maintenance
- Commercial/Industrial grade Honda gasoline/petrol engine iGX800
- General pump Series 66
- 50' high pressure hose w/quick connects
- Johnson L2200 12V feed pump/hose assembly with marine grade plug-in connector and switch
- 1" x 15Lft by-pass hose assembly
- Oversize pneumatic tires
- Dual padded shock absorbing feet
- 3/4" cold-rolled steel threaded axle
- Polychain belt system offers balanced power transfer
- Remote six gallon poly fuel tank-Non-Carb Evaporative Compliant
- The unit feature electric start and include battery & marine battery box

TOOLS

- **CaviBlaster Zero-Thrust Gun**

Ergonomically balanced underwater tool, perfect for cleaning all surfaces, either complex geometry or flat, and in tight areas. Generates 2,800psi at 12gpm of water flow.



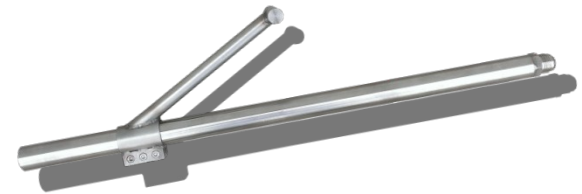
- **Balanced CaviBlaster Lance for an ROV**

This tool is easily mounted onto an observation class ROV, such as VideoRay. Such an ROV, coupled with a CaviBlaster balanced lance, make this integration a very capable inspection tool.



- **Unbalanced CaviBlaster Lance for a Work Class ROV**

This lance generates 2,800psi at 12gpm of water flow and 132N / 13.5kg of back thrust. Capable of cleaning significant calcified fouling at a depth of up to 75 meters / 250 feet.



- **CaviDome**

The CaviDome cleans a 16 inch / 40 cm swath in a single pass for flatter surfaces. It incorporates negative pressure in order to adhere to the surface when operating. Two rotating nozzles generate 2,800psi at 12gpm of water flow.

